

# SUMNEYTOWN PIKE/PA 309 CONNECTOR SR 1058 HT3 STATUS UPDATE



MCCORMICK TAYLOR – MARCH 25 2024

# SUMNEYTOWN PIKE/PA 309 CONNECTOR PHASE II (SR 1058 HT2) CURRENTLY IN CONSTRUCTION



**SUMNEYTOWN PIKE/PA 309 CONNECTOR PHASE II  
(SR 1058 HT2)**

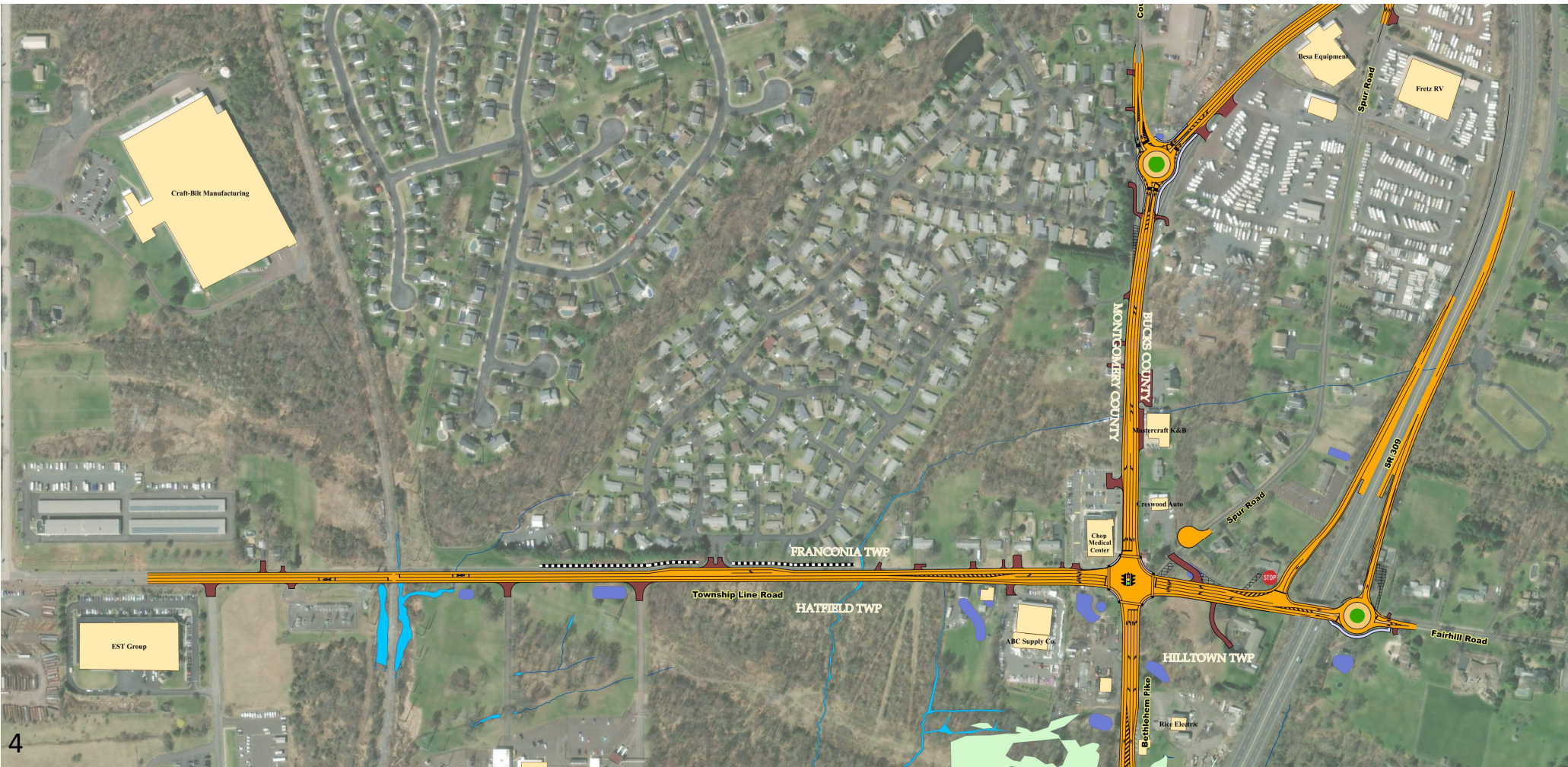
## **SR 1058 HT2 Construction Work Remaining to be completed**

- SR 1058 between Allentown Rd and Cowpath Rd – minor work remaining.
- Complete construction on existing Township Line Road. Complete construction along Township Line and Hatfield Souderton Road area.
- Complete construction of Cowpath Road intersection.
- Scheduled to be completed and open to traffic fall 2025.
- Schedule independent of Section HT3





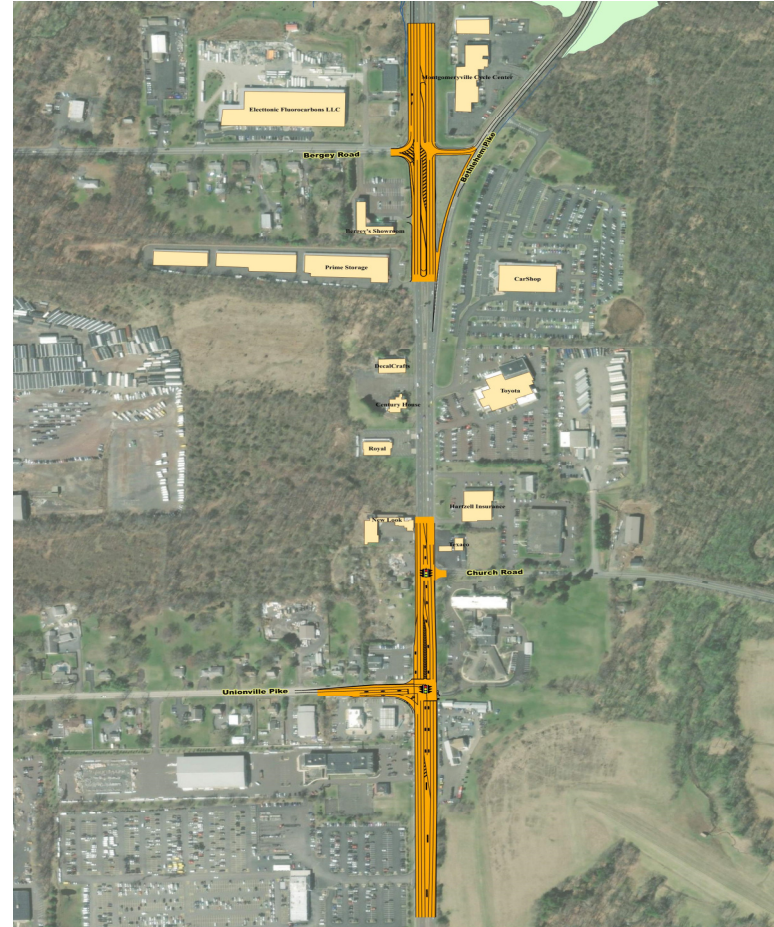
# SUMNEYTOWN PIKE/PA 309 CONNECTOR PHASE III (SR 1058 HT3) CURRENTLY IN DESIGN





## SUMNEYTOWN PIKE/PA 309 CONNECTOR PHASE III (SR 1058 HT3) CURRENTLY IN DESIGN

- Close PA 309 NB Left Turn at Bergey Road permanently.
- Revise PA 309 Unionville Intersection to allow for double left turns onto Unionville Pike.
- Minor ROW takes at Unionville Intersection to widen roadway.
- Traffic signal installation at PA 309 and Church Road



**SUMNEYOWN PIKE/PA 309 CONECTOR PHASE III (SR 1058 HT3)  
ROUNDBOUT AT PA 309 INTERCHANGE**





**SUMNEYOWN PIKE/PA 309 CONECTOR PHASE III (SR 1058 HT3)  
ROUNDBOUT AT BETHLEHEM PIKE/COUNTY LINE ROAD**



## **Traffic Control, Road Closures and Detours**

- Several road closures and resulting detours will be utilized to construct project.
- Temporary closures of Fairhill Road, Township Line Road, County Line Road, Bethlehem Road at different stages of the project.
- All residential and business access will remain open at all times
- PA 113/Keystone Drive intersection will require a traffic signal during the detour. The signal will remain in place after the project is completed.



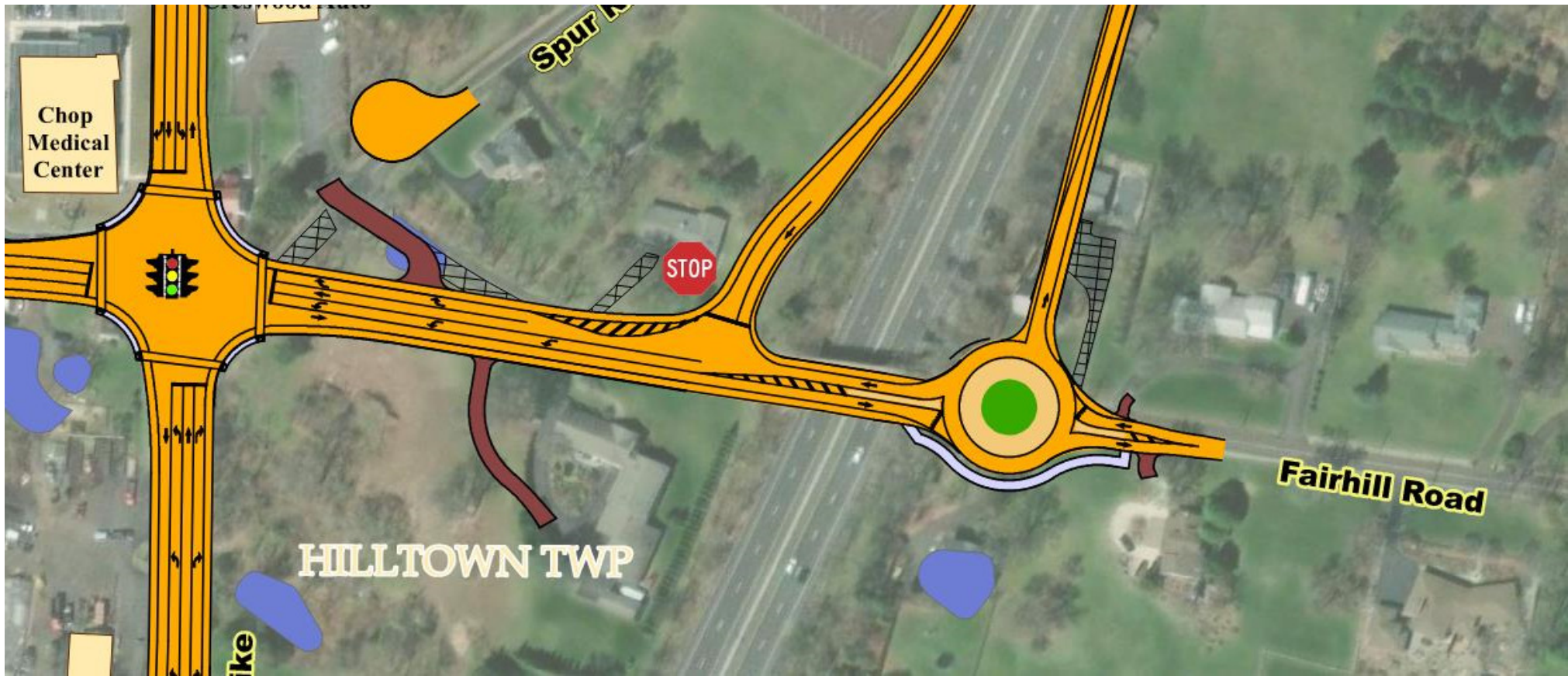


## **Design Activities Continuing**

- Final Right-of-Way (ROW) plans approved mid-2023.
- ROW Acquisitions and Negotiations with property owners on-going.
- Final Design continuing.
- Utility coordination, storm water management and environmental permitting has been initiated.
- Project scheduled to be advertised for construction late 2026.
- Construction activities expected to start 2027.



**SUMNEYOWN PIKE/PA 309 CONECTOR PHASE III (SR 1058 HT3)**  
**FAIRHILL ROAD TRAFFIC**

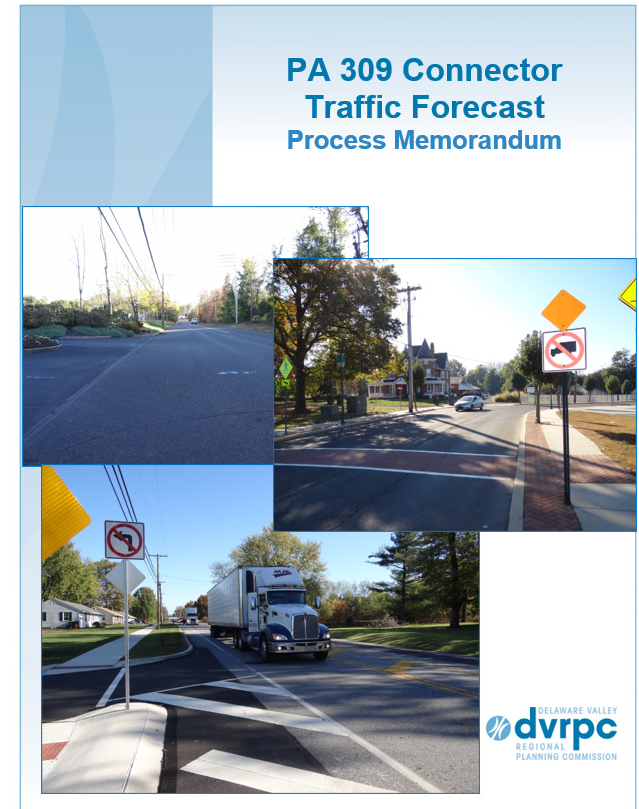




**SUMNEYOWN PIKE/PA 309 CONECTOR PHASE III (SR 1058 HT3)  
FAIRHILL ROAD TRAFFIC**

## Delaware Valley Regional Planning Commission (DVRPC) Volume Projects

- Partnered with DVRPC to develop volumes for future conditions.
- TIM 2.3 travel demand model
- Detailed model of roadway and transit network of the 9 member counties.
- Future volume forecast



**SUMNEYOWN PIKE/PA 309 CONECTOR PHASE III (SR 1058 HT3)  
FAIRHILL ROAD TRAFFIC**

## Traffic Volumes

- Existing Traffic Counts
- No-Build
  - HT2 Completed
- Build
  - HT3 and HT2 Completed
- Fairhill Semi-Diverter

Time Period	Direction	Existing (2019)	No-Build (2045)	Build (2045)	Semi-Diverter (2045)
AM Peak Hour	Eastbound	110	190	420	-
	Westbound	100	160	440	440
	Combined	210	350	860	440
PM Peak Hour	Eastbound	90	190	320	-
	Westbound	110	180	370	370
	Combined	200	370	690	690
Daily	Combined	1,700	3,100	6,800	-



**SUMNEYOWN PIKE/PA 309 CONECTOR PHASE III (SR 1058 HT3)  
FAIRHILL ROAD TRAFFIC – HILLTOWN TWP REQUEST**

2045 Build with Current HT3 Design Video

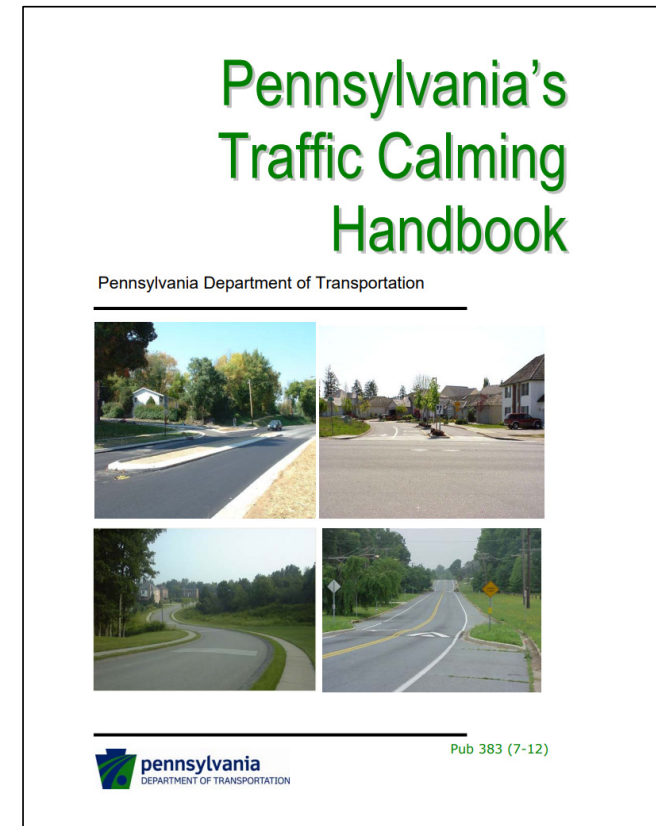




**SUMNEYOWN PIKE/PA 309 CONECTOR PHASE III (SR 1058 HT3)  
FAIRHILL ROAD TRAFFIC**

## Traffic Calming Measures

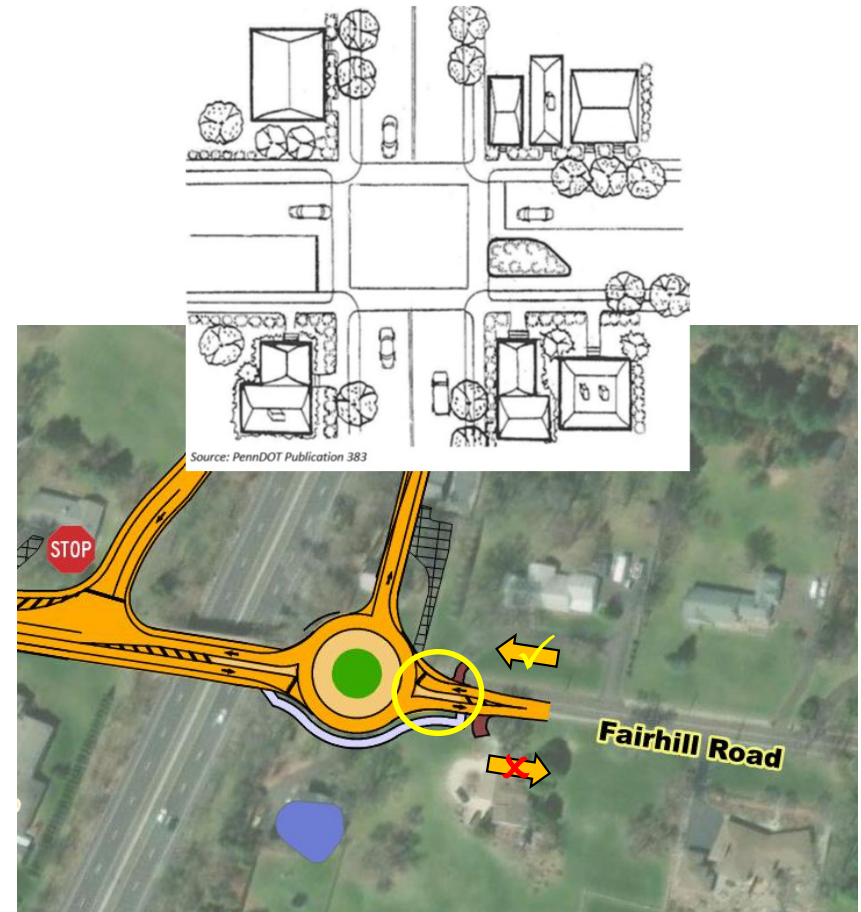
- Reduce speed limit from 45 MPH
- Truck restrictions
- Speed humps



**SUMNEYOWN PIKE/PA 309 CONECTOR PHASE III (SR 1058 HT3)  
FAIRHILL ROAD TRAFFIC – HILLTOWN TWP REQUEST**

## Semi-Diverter Study

- What is a Semi-diverter?
- Investigated a Semi-Diverter configuration at the Fairhill Road & Northbound PA 309 Ramp

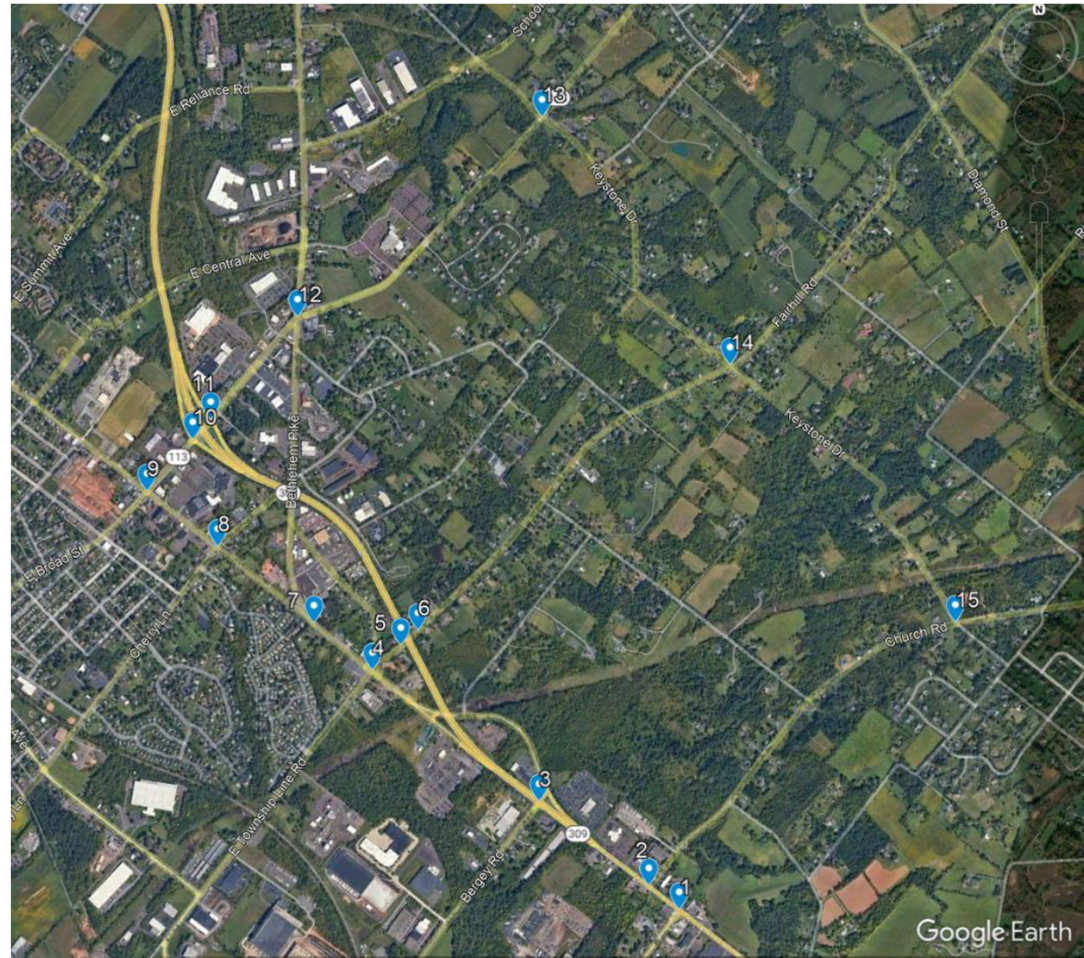


**SUMNEYOWN PIKE/PA 309 CONECTOR PHASE III (SR 1058 HT3)  
FAIRHILL ROAD TRAFFIC – HILLTOWN TWP REQUEST**

## Study Area

15 intersections along impacted routes:

- Bethlehem Pike
- PA 113
- County Line Road
- Keystone Drive
- Fairhill Road





## **Impacts of the Semi-Diverter**

Degraded performance at intersections in study area:

- Bethlehem Pike & PA 113 (Souderton Road)
- PA 113 (Souderton Road) & County Line Road
- Keystone Drive & Church Road (Stop Controlled)
- PA 113 (Souderton Road) & PA 309 Northbound Ramp

Other impacts:

- Emergency response times
- Local access (school buses)
- Maintenance services (trash collection)



***QUESTIONS?***

***[www.pa309connector.com](http://www.pa309connector.com)***



# FOLLOW PENNDOT



[www.PennDOT.pa.gov](http://www.PennDOT.pa.gov)



[www.DMV.pa.gov](http://www.DMV.pa.gov)



[PennsylvaniaDepartmentofTransportation](https://www.facebook.com/PennsylvaniaDepartmentofTransportation)



[PennDOTNews](https://twitter.com/PennDOTNews)



[PennsylvaniaDOT](https://www.instagram.com/PennsylvaniaDOT)



[PennDOTSec](https://www.facebook.com/PennDOTSec)



[/company/PennDOT](https://www.linkedin.com/company/PennDOT)



[PennDOTSec](https://twitter.com/PennDOTSec)



[PennsylvaniaDOT](https://www.youtube.com/PennsylvaniaDOT)